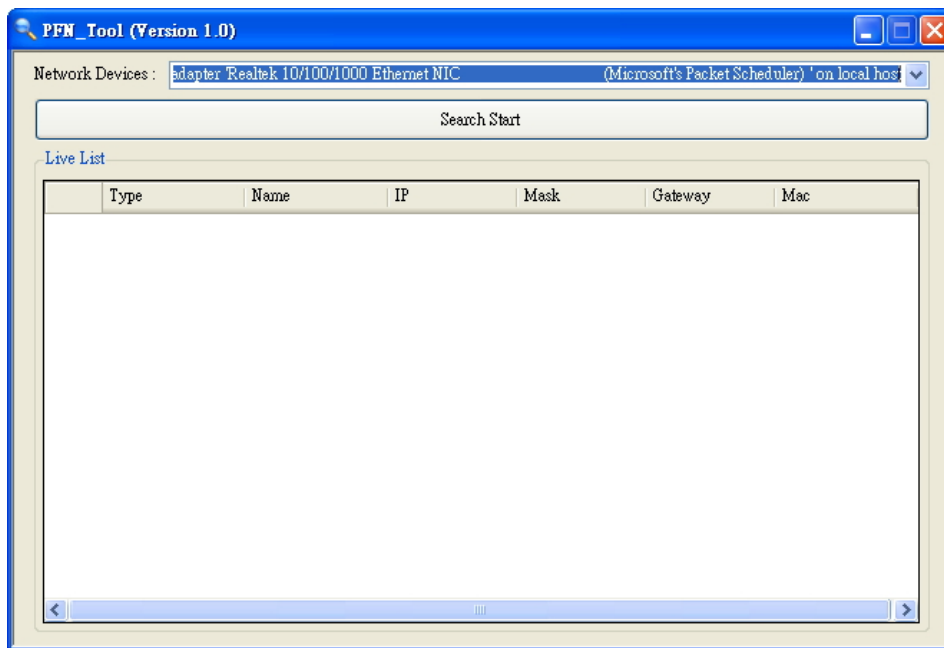


# How to set device name and Network parameter using PFN-Tool?

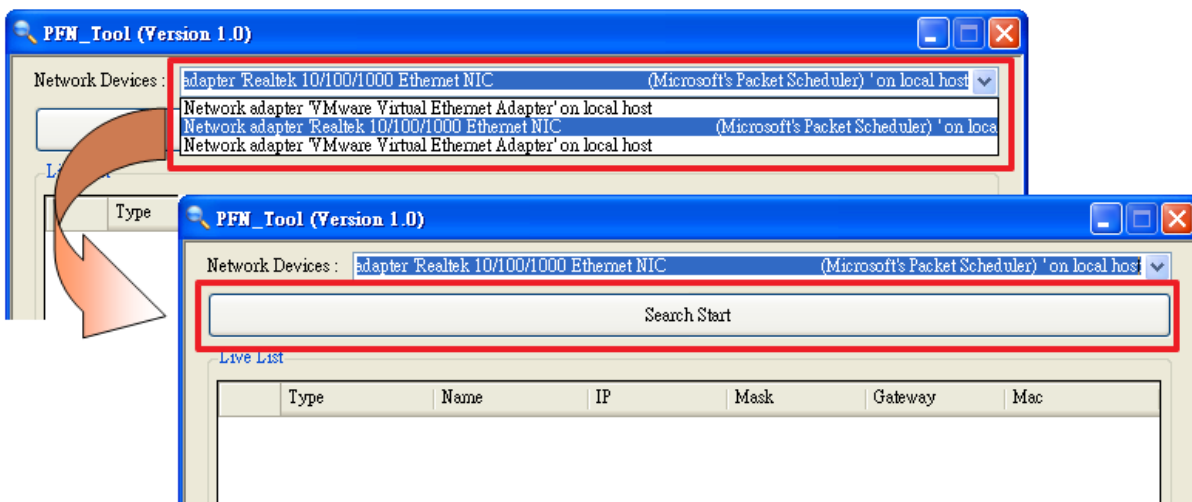
Step 1: Download the PFN\_Tool software.

[ftp://ftp.icpdas.com.tw/pub/cd/fieldbus\\_cd/profinet/utility/](ftp://ftp.icpdas.com.tw/pub/cd/fieldbus_cd/profinet/utility/)

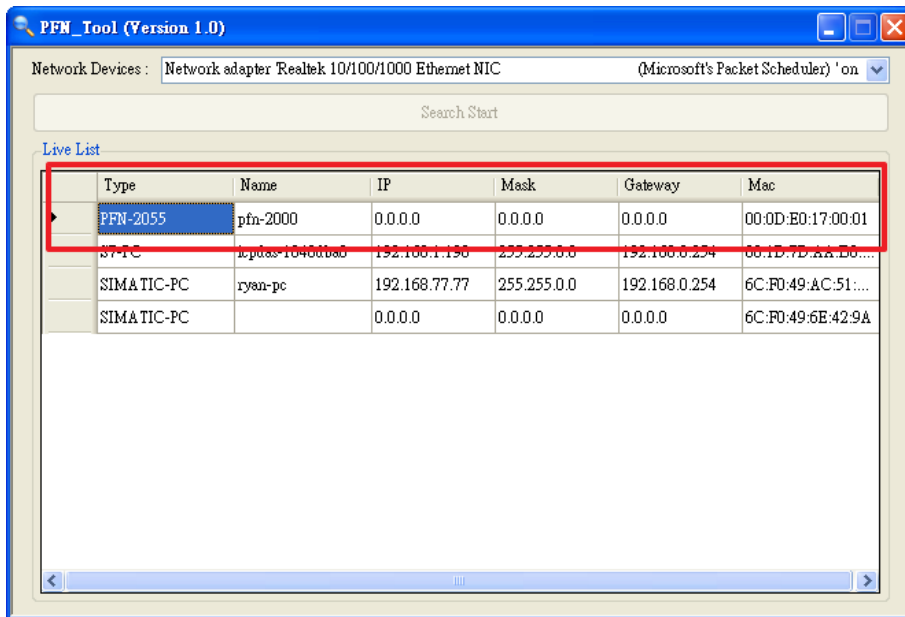
Step 2: Double click "**PFN\_Tool.exe**"



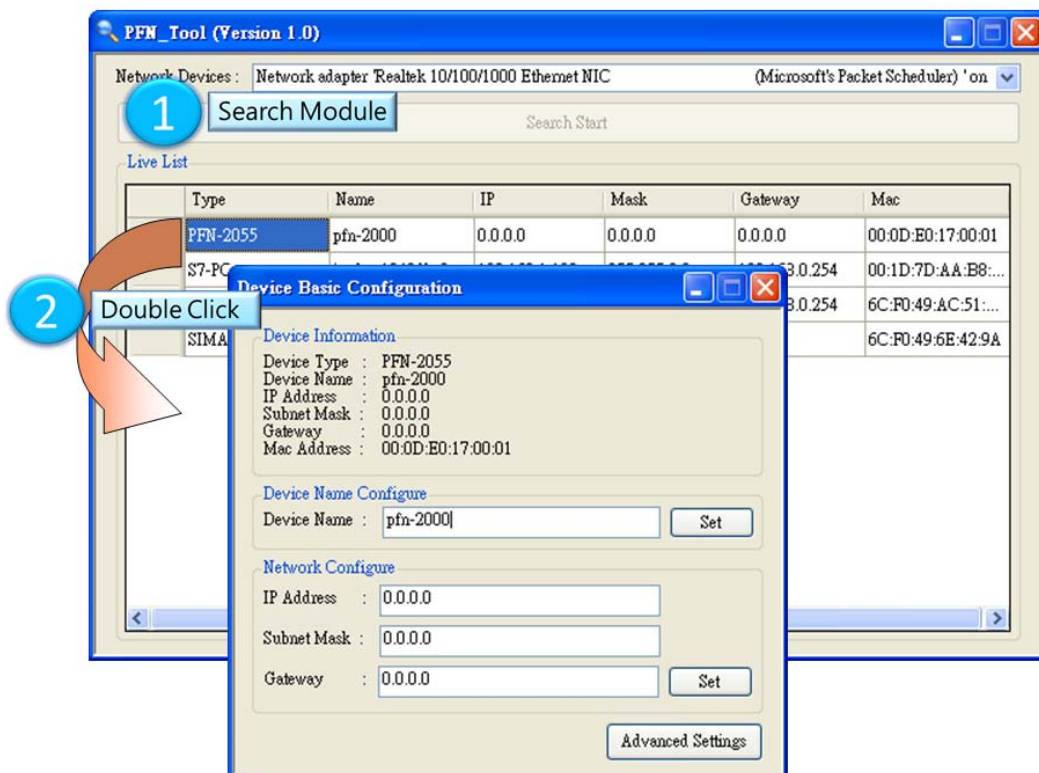
Step 3: Select network device that connect with PROFINET modules, and press "**Search Start**" button.



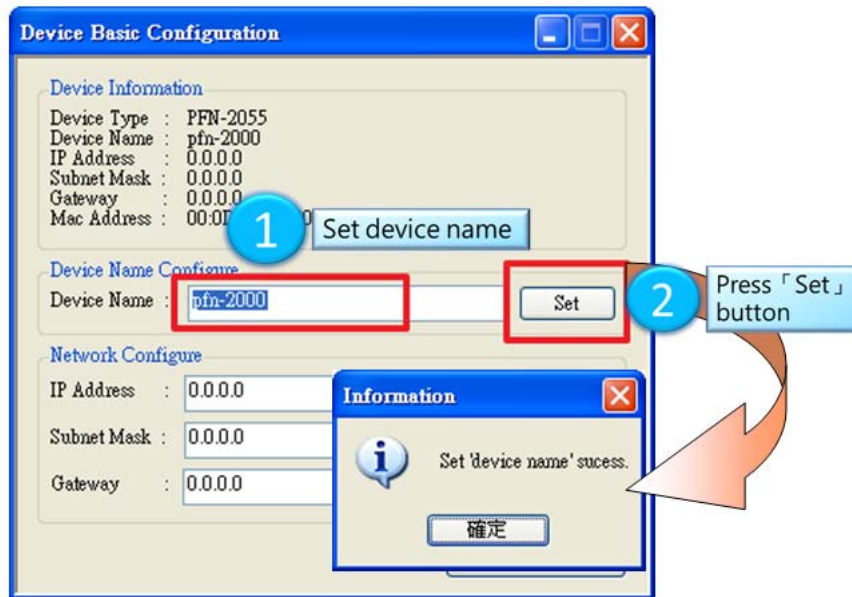
Step 4: Live List will show all of the PROFINET devices on the same network of network device. (Note \*)



Step 5: Double click module.



## Step 6: Set device name.

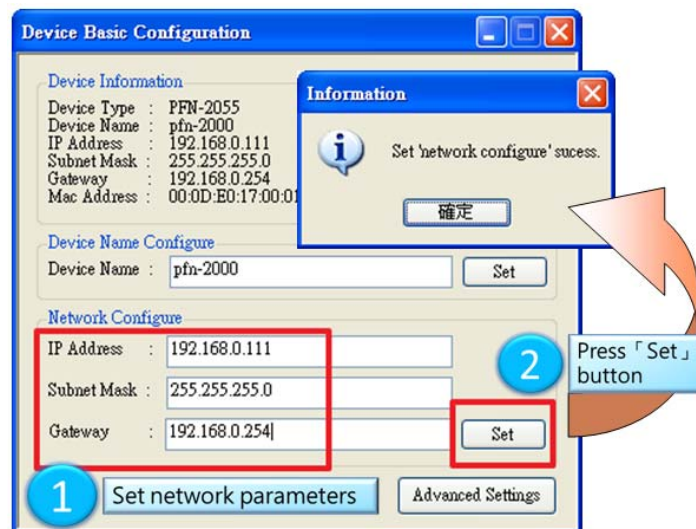


## Step 7: Set network parameters. (Note \*\*)

The network parameter of PFN-2000 module must have the same domain and different IP with PC.

EX: PC's IP = 192.168.1.110

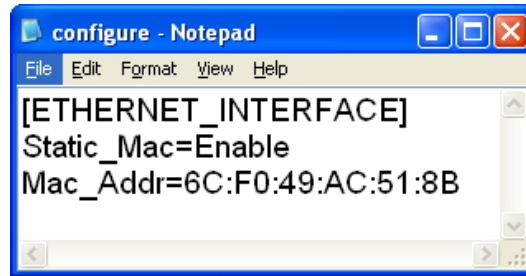
module's IP = 192.168.1.111



```
Connection-specific DNS Suffix . : 
Description . . . . . : Realtek RTL8168C(P)/8111C(P) PCI-E Gigabit Ethernet NIC
Physical Address. . . . . : 6C-F0-49-AC-51-8B
Dhcp Enabled. . . . . : No
IP Address. . . . . : 192.168.0.110
Subnet Mask . . . . . : 255.255.255.0
Default Gateway . . . . . : 192.168.0.254
DNS Servers . . . . . : 168.95.1.1
```

NOTE:

- \* If you can't find the module by searching the network. Please open the file "configure.ini" (default path = C:\Program Files\ICPDAS\PROFINET\PFN\_Tool). In this file, please set Static\_Mac=Enable & Mac\_Addr= MAC address of network device.



```
Connection-specific DNS Suffix . :  
Description . . . . . : Realtek RTL8168C(P)/8111C(P) PCI-E Gigabit Ethernet NIC  
Physical Address. . . . . : 6C-F0-49-AC-51-8B  
Dhcp Enabled. . . . . : No  
IP Address. . . . . : 192.168.0.110  
Subnet Mask . . . . . : 255.255.255.0  
Default Gateway . . . . . : 192.168.0.254  
DNS Servers . . . . . : 168.95.1.1
```

- \* \* When PROFINET controller connect to module (S1A LED=ON & S2A LED=ON), user can't set device name and network parameters.

